

Humana.



Average hospital stay: 4.8 days. Some extra peace of mind – a cash benefit when they need it most. Humana Supplemental Health may be the right choice for you and your family

Find out more about how **Humana can help you.**



CRAIN'S DETROIT BUSINESS

Detroit and Southeast Michigan's premier business news and information website

Advanced Search: Detroit Business»

Home

This Week's Issue

News

Crain's Awards

Features

Lists/Resources

Columns

Blogs

Events

Job Front

Video

Not logged in to community. [LOG IN](#) or [REGISTER](#) | [Detroit Jobs](#) | [Free E-Mail Signup](#) | [Subscriber Service](#) | [Contacts](#) | [Advertise](#) | [Classifieds](#)

Topics in this article: [Entrepreneurship](#) [Second Stage Walsh College Women](#)

Originally Published: April 06, 2012 12:34 PM Modified: April 06, 2012 2:43 PM

Michigan Women's Foundation launches competition to give \$100,000 to women entrepreneurs

By Meghana Keshavan



The **Michigan Women's Foundation** announced a competition today for women entrepreneurs to get up to \$100,000 in cash awards and in-kind support.

The new Entrepreneur-You Business Plan Competition, sponsored by the foundation, **Walsh College**, **Inforum** and **Huntington Bank**.

The competition is open to all industries and levels of entrepreneurship. There are three categories: professional/company, collegiate and high school. Applicants either can describe a business they currently run, or pitch an idea for a product or service that they think deserves startup funding.

The deadline for the professional/company category is April 26, and the deadline for the high school and collegiate categories is May 4.



• Most Read

• Most Commented

Dan Gilbert's next purchase ... apartments

Entrepreneur plans downtown Detroit bus line

Belle Isle will not have entrance fee under first year of state management

Companies struggle to fill jobs for skilled laborers

Why is state the hot bet for more casinos?

The award money comes from Columbus-based Huntington Bank, and winners will also get entrepreneurial coaching from the Michigan Women's Foundation.

"Investing in women-owned businesses brings immediate and numerous benefits, not only to the families and communities of these women, but positively impacting the larger economy," Carolyn Cassin, president and CEO of Michigan Women's Foundation, said in a statement.

The idea for the competition came from the Michigan Women's Foundation's Entrepreneur-YOU conference, a yearly summit at Walsh College for women in business at all levels.

"The success of the Entrepreneur-You conference confirmed our belief that there are a significant number of women entrepreneurs in Southeast Michigan ready to make a move," Stephanie Bergeron, president and CEO of Walsh College said in a statement.

More information is available at miwf.org.

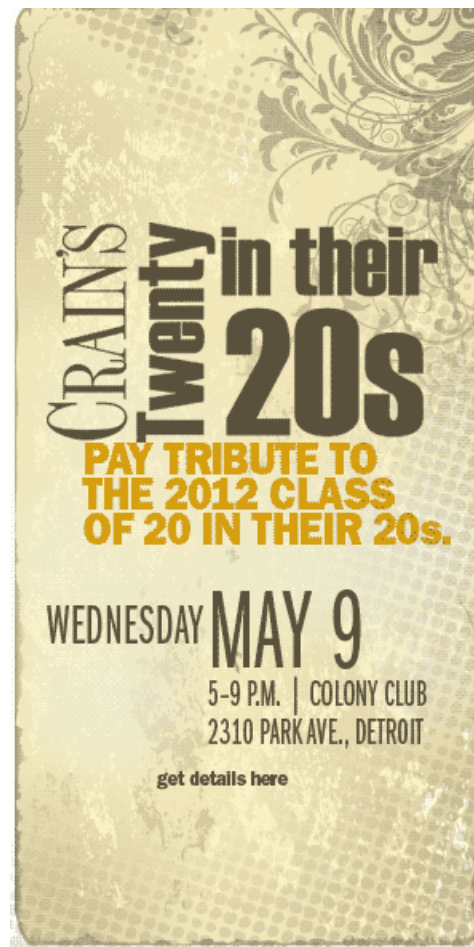
Topics in this article: [Entrepreneurship](#) [Second Stage](#) [Walsh College](#) [Women](#)



POWERED BY Pluck

Subscribe to *Crain's Detroit Business*

If you enjoy the content on the *Crain's Detroit Business* Web site and want to see more, try 8 issues of our print edition **risk-free**. If you wish to continue, you will receive 44 more issues (for a total of 52 in all), including the annual Book of Lists for just \$59. That's **over 55% off** the cover price. If you decide *Crain's* is not for you, just write "Cancel" on the invoice, return it and owe nothing. The 8 issues are yours to keep with no further obligation to us. Sign up below.





Name:

E-mail:

Company:

Address:

City:

State:

Zip/Postal Code:

Country:



Offer valid for new MI subscribers only. Non-MI subscribers - \$79. All other Foreign - \$127.



Home

News

Get More

Lists/Resources

- Subscription Center
- E-Newsletters
- RSS
- Facebook
- LinkedIn
- Twitter
- Advertise
- How to Get Your News in Crain's
- Reprints
- Editorial Calendar

- Latest News
- Advertising/Marketing/Media
- Auto Suppliers/Manufacturing
- Banking/Finance
- Defense
- Economic Development/Economy
- Education/Training/Workforce
- Energy/Environment
- Entrepreneurship/Second Stage
- Food/Restaurants
- Government/Public Policy/Politics

- Health Care/Health Care Extra
- Hospitality/Tourism
- Legal Issues/Law
- Nonprofits/Philanthropy
- Real Estate
- Retail
- Services
- Sports/Entertainment
- Statewide/Michigan Business
- Technology/Life Sciences/R&D
- Transportation

- Lists
- Book of Lists
- CareerWorks
- Nonprofit Job Board
- World Watch Monthly
- Latest Staff Blogs
- Video
- UM-Dearborn Investment Challenge

ALL THE CONTACTS YOU NEED for \$249

Download the **Crain's 2012 Book of Lists** in an easy-to-use Excel® spreadsheet form

2012 **Book of Lists** and Detroit Yearbook

Submit Your Events

Upcoming Crain's Events

LIVING AND INVESTING IN THE D MOVING THE NEEDLE

shopautoweek.com

THIS WEEK'S ISSUE

- This Week's Issue
- Weekly Issue PDFs

© 2012 Crain Communications Inc.
Use of editorial content without permission is strictly prohibited. All rights Reserved
[Privacy Statement](#) | [Video Reposting Policy](#) | [Disclaimer](#)

